



Forest Sustainability in the Northeastern Area

Taking measures now to ensure
healthy forests for the future

Northeastern Area Association of State Foresters and
USDA Forest Service, Northeastern Area State and Private Forestry





Sustainability Is an Overarching Goal and an Extraordinary Challenge

- Ensures continued existence and use of forests to meet human physical, economic, and social needs
- Preserves the health of forest ecosystems in perpetuity
- An ethical choice to preserve options for future generations while meeting the needs of the present





Criteria and Indicators help us understand the concept of sustainability

Criterion

- Goal or category that reflects broad public values and scientific principles
- Characterized by indicators

Indicator

- Measures an aspect of a criterion
- Quantitative or qualitative variable used to detect change
- Value free





The Santiago Declaration

A nonbinding agreement that states our willingness to use criteria and indicators for tracking progress in forest sustainability.

Indicators reflect a common understanding among the countries regarding:

- The contribution of forests to the well-being of people
- Forest conditions and related processes that must be maintained
- The desire for legal, institutional, and economic systems that work toward . . . not away . . . from sustainability

Countries that signed the Santiago Declaration

Argentina	Chile	Republic of Korea	New Zealand
Australia	China	Russian Federation	United States
Canada	Japan	Mexico	Uruguay





The Montreal Process Criteria

1. Biological diversity
2. Productive capacity of the forest
3. Forest ecosystem health
4. Soil and water resources
5. Contribution to global carbon cycles
6. Socio-economic benefits from forests
7. Legal, institutional, and economic systems





The United States

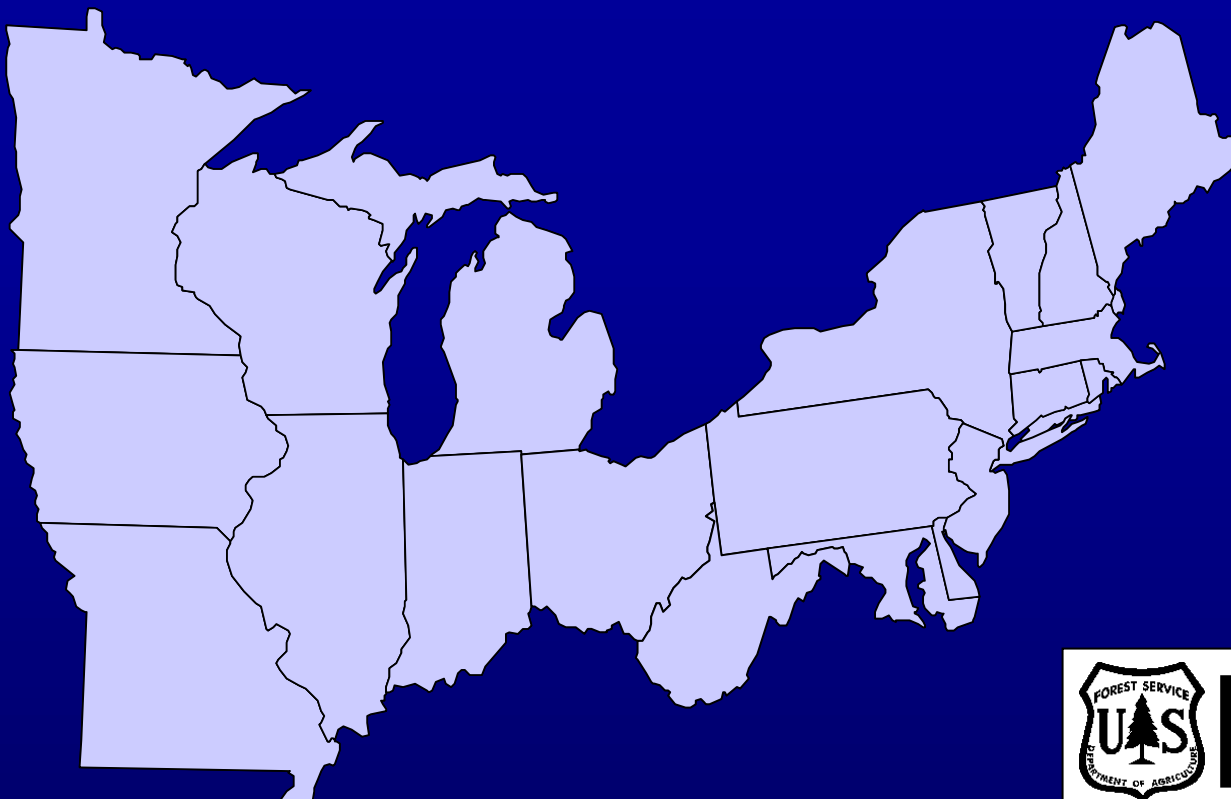
Criteria and Indicator (C&I) Efforts

- 1995 U.S. signed the nonbinding Santiago Declaration, an agreement to monitor Montreal Process C&I at the national scale.
- 1997 U.S. produces first approximation report on the Montreal Process C&I.
Report addresses data availability and interpretation.
- 2003 U.S. releases *National Report on Sustainable Forests*, developed through the National Roundtable on Sustainable Forests.





The Northeastern Area



Sustainable Forest Management

The Role of the USDA Forest Service Northeastern Area and State Forestry Agencies

Implementation

- Criteria and indicators framework
- Inventory and monitoring
- Align programs
- Education and communication





Uses of C&I

- Assessments of forest conditions and policy effectiveness
- Support comprehensive strategic forest resource planning
- Issue management
- Inventory and monitoring structure





Benefits of C&I

- Help define sustainability
- Convey critical and complex information simply
- Encourage holistic problem-solving
- Useful at a variety of scales



NA/NAASF

Criteria and Indicator Implementation Measures

- Forest health and sustainability reports
- Develop regional and State level indicators
- Strategic planning
- Clearinghouse for sustainability information





Forest Health and Sustainability Reporting





Forest Sustainability Assessment Technical Report—*Purpose*

- Gain knowledge about using C&I
- Report on forest health on public and private lands
- Demonstrate an ecologically based approach to assess forest conditions
- Provide a reference document for resource professionals





Forest Sustainability Assessment Technical Report—*Contents*

- Forest conditions and management
- Comparisons to national conditions
- State statistics in appendices
- One-stop shopping for information across criteria





Sustainability Assessment Highlights for the Northern United States



United States
Department of
Agriculture
Forest Service
State and Private Forestry
Northeastern Area
NA-TP-05-03



July 2003

Purpose:

- Raise general awareness of conditions in the Northern United States
- Summarize important points from technical report for policymakers, managers, and other stakeholders
- Available online:
<http://www.na.fs.fed.us/sustainability>



Future Sustainability Reporting

- Based on Area-wide base indicators
- Organized according to the Montreal Process criteria
- Reports produced at least every 5 years
- Up to date Web-based information system
- Complementary to national C&I reporting





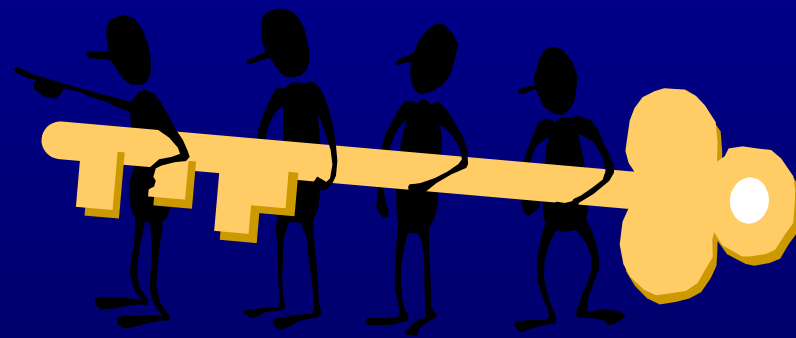
Area and State Level Sustainability Indicators





Benefits of Common Indicators

- Promote linkage across multiple scales
- Facilitate communication and cooperation
- Help reveal cumulative effects





Development of Base Indicators

- Base set of indicators developed by a C&I work group
- Indicator evaluation process, considering:
 - Scale appropriateness
 - Reliability
 - Feasibility
 - Ability to measure over time
 - Ease of analysis/interpretation
 - Usefulness to audience
- Selected to span the Montreal Process Criteria
- Comprehensive evaluation of data available



NA/NAASF Base Indicators

Criterion 1: Conservation of Biological Diversity

1. Area of forest land relative to total land area and area of reserved forest land
2. Extent of area by forest type and by size class, age class, and successional stage
3. Degree of forest land conversion, fragmentation, and parcelization
4. Status of forest/woodland communities and species of concern (with focus on forest-associated species)

Criterion 2: Maintenance of Productive Capacity of Forest Ecosystems

5. Area of timberland
6. Annual removal of merchantable wood volume compared to net growth

NA/NAASF Base Indicators

Criterion 3: Maintenance of Forest Ecosystem Health and Vitality

7. Area and percent of forest land affected by potentially damaging agents

Criterion 4: Conservation and Maintenance of Soil and Water Resources

8. Area and percent of forest land with diminished soil quality
9. Area and percent of forest land adjacent to surface water and area of forested land by watershed
10. Water quality in forested areas

Criterion 5: Maintenance of Forest Contribution to Global Carbon Cycles

11. Forest ecosystem biomass, and forest ecosystem and forest products carbon pools

NA/NAASF Base Indicators

Criterion 6: Maintenance and Enhancement of Long-term Multiple Socio-economic Benefits to Meet the Needs of Societies

12. Value and volume of wood and wood products production, consumption, and trade
13. Outdoor recreational facilities and activities
14. Public and private investments in forest health, management, research, and wood processing
15. Forest ownership and land use (including acres of specially designated land)
16. Employment and wages in forest-related sectors

Criterion 7: Legal, Institutional, and Economic Framework for Forest Conservation and Sustainable Management

17. Existence, type, and monitoring of forest management standards/guidelines
18. Existence, type, and frequency of forest-related planning, assessment, and policy review



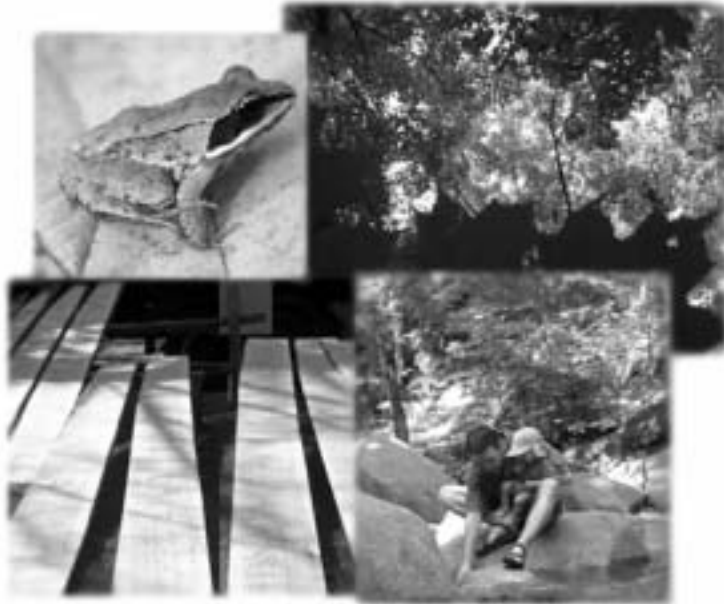
Use of Base Indicators Across Scales

- NA/NAASF promise to collect and report on base set
- Advantage of common data across State boundaries
- Base set of indicators and supporting data is suitable for regional and State use
- Can supplement the base set of indicators with additional data and indicators
- Supports national level sustainability efforts



USDA Forest Service, Northeastern Area and
Northeastern Area Association of State Foresters

**Base Indicators of Forest Sustainability:
Metrics and Data Sources for
State and Regional Monitoring**



USDA United States
Department of
Agriculture



Forest Service
State and Private Forestry
Northeastern Area

Purpose:

- To encourage the use of common data sources where feasible
- document NA/NFRPA research regarding desirable data sources and metrics.
- To encourage the use of the seven criteria and base indicators across the regional and state scales.



Support Area-wide and State Level Strategic Planning





Strategic Planning

- Sustainable forest management has been keystone in NA and NAASF strategic plans since 1995.
- Sustainability reports provide a context for the NA/NAASF strategic plans and State forest resource plans.
- Indicators help us monitor our performance.





Clearinghouse for Sustainable Forest Management Information





Sustainability Clearinghouse

Purpose

To seek out and share information about:

- Sustainable forestry
- The use of C&I
- Ongoing NA/NAASF sustainability efforts

NA Sustainability Web site:
<http://www.na.fs.fed.us/sustainability>





Sustainability Clearinghouse

Products

- A database of 60 State, regional, and national sustainability efforts linked to forest indicators
- Sourcebook on C&I
- *Sustainability Assessment Highlights for the Northern United States*
- Publication on role of NA and NAASF in Sustainable Forest Management
- *NA/NAASF Base Indicators of Forest Sustainability: Metrics and Data Sources for State and Regional Monitoring*





Concept of the Roundtable

- Initiated by the National Roundtable on Sustainable Forests
- Convene multiple stakeholders to talk about forests and their management.
- Take advantage of data and information available about forest sustainability.
- Promote the use of criteria and indicators of sustainability in planning and monitoring.





Upper Mississippi River Regional Roundtable

March 23-24, 2004



Upper Mississippi River Regional Roundtable



➤ Upper Mississippi River
Basin Partnership

➤ MN, WI, IA,
IL, MO, IN, MI

Steering Committees for
Partnership and roundtable
linked but not the same.



Concept of the Roundtable

- Initiated by the National Roundtable on Sustainable Forests
- Convene multiple stakeholders to talk about forests and their management.
- Take advantage of data and information available about forest sustainability.
- Promote the use of criteria and indicators of sustainability in planning and monitoring.





Deliverables

Summary of the regional roundtable discussions is developed

- Shared with participants
- Submitted to the National Roundtable for inclusion with input from other regional roundtables for national distribution.

Preliminary list of indicators of forest sustainability relevant to the region

Suggested Actions to be handed off to the Upper Mississippi River Basin Partnership.





Opportunity to Roll-out National and Regional Sustainability Work

- National Assessment of Forest Sustainability
- NA/NAASF Sustainability Highlights/Initiative
- Great Lake Forest Alliance
- Other





Potential Participants

- Regional stakeholders and individuals
- Committed to the goal of sustainable forests
- Regional, national and local expertise with the development and use of indicators of sustainable forests or sustainable development
- Represent a breadth of interests similar to that on the National Roundtable on Sustainable Forests

