

# Montreal C&I –

*Do they Tell us  
anything about  
the Sustainability  
of US Forests?*

Lloyd C. Irland  
Sustainable Forests  
Roundtable,  
Dec. 13-14 2005  
Washington DC



12/13/2005

1

## Outline

1. Overview C&I concept
2. Various issues/challenges
3. Tough questions
4. Recommendations

12/13/2005

2

## Montreal Criteria

1. Biol. Diversity	9 indic.
2. Productive capacity	5
3. Ecosystem health/vitality	3
4. Soil & Water	8
5. Global carbon cycles	3
6. Socioeconomic benefits	19
7. Legal, Inst., Econ. Framework	20

12/13/2005

3

- FS –766 has measured the terrain for us, showing us that --
- IDENTIFYING
- MEASURING
- ANALYZING National Indicators of SFM is
- **NOT EASY!**
  - We'll talk about some of the challenges...

12/13/2005

4

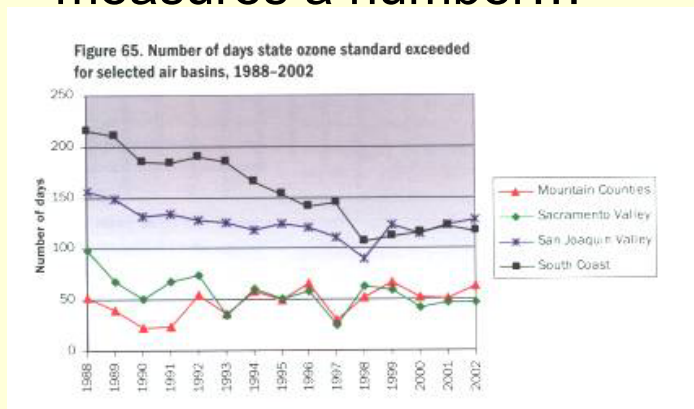
## Defining an Indicator

- Current Montreal format too simple
- Many Indicators aren't – they are concerns or general issues & not measurable
- Will need multiple levels
- Currently a laundry list with little coherence or underlying philosophy
- See useful discussion in NCSSF Report, also Ellefson et al 2005 U Minn bulletin

12/13/2005

5

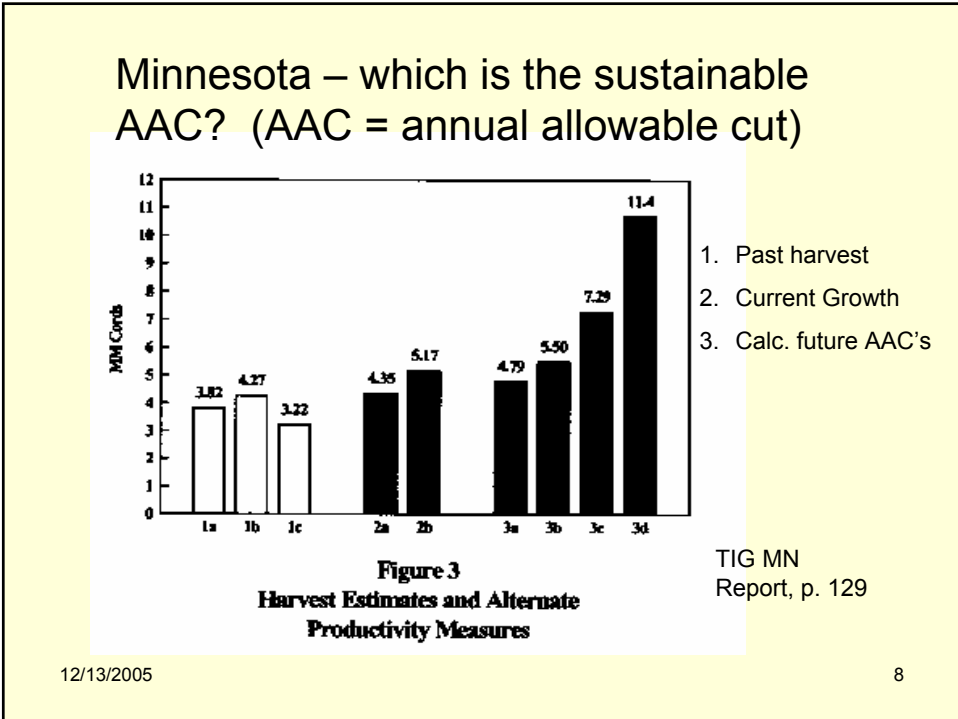
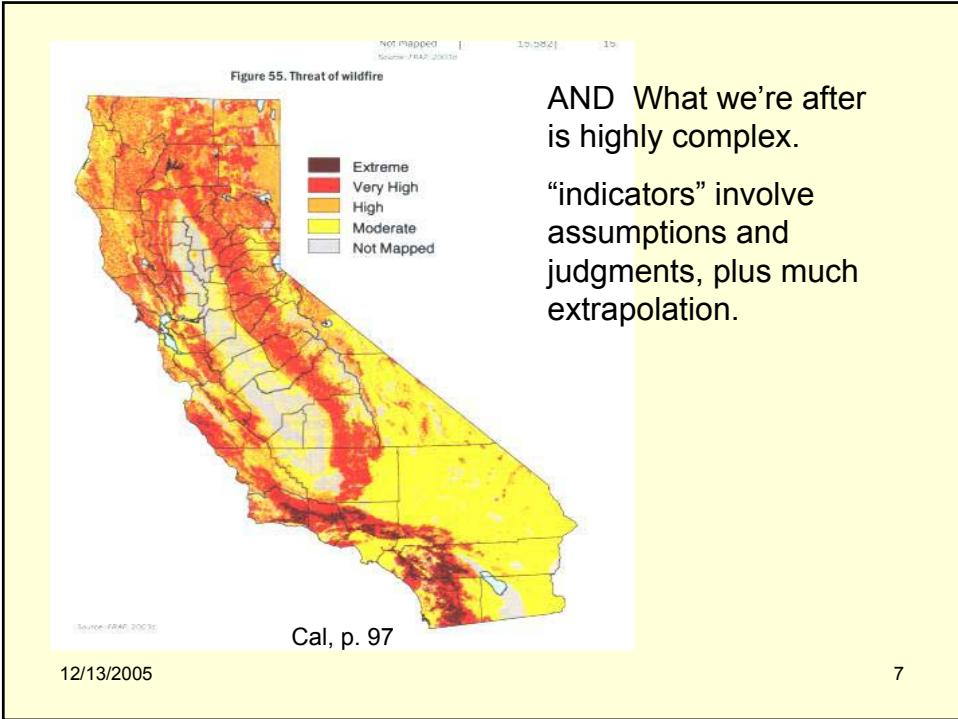
## Misleading Metaphor Indicator = magic box that measures a number...



Cal, p. 120

12/13/2005

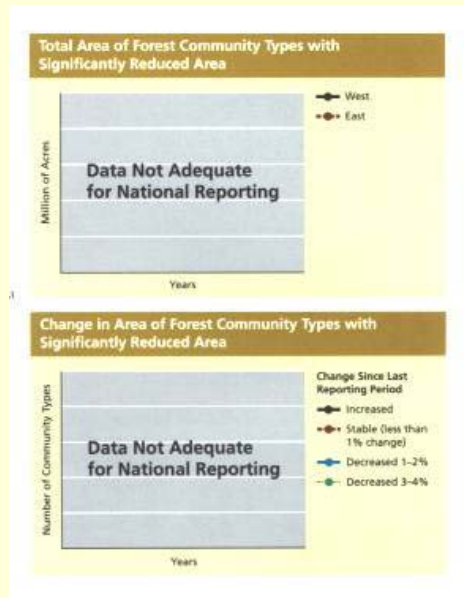
6



# Heinz Report A prize for honesty!

(p. 129)

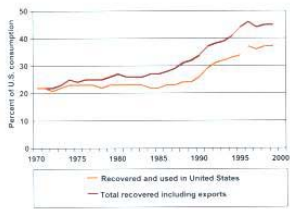
PS: not  
sure Reed  
Noss would  
agree...



12/13/2005

9

Indicator 33. Degree of Recycling of Forest Products



## Recycling: a good news story



## Area of Tree Planting 1930- 2000.

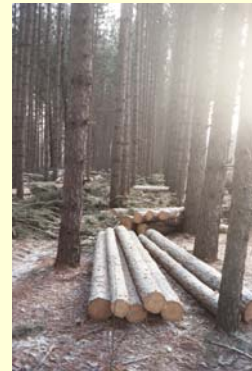
FS 766 p. 52.

Relation to SFM

needs some interpretation

12/13/2005

10



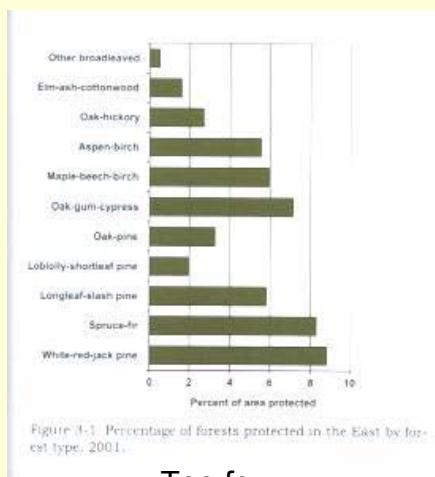
Thinned every ten yrs, Most of this wood goes to sawmills.

But -- sustainability debated, ecologically, politically, financially.

12/13/2005

11

## What level of Aggregation?



Too few.

**FS-766** Report presents 22 type groups.

**TNC report:**

Number of veg. associations

Forest 1,505

Woodland 813

Shrubland 738

TNC, 2000, p. 219

Too many. No Data.

12/13/2005

12

# Could Use More Geographic Regions

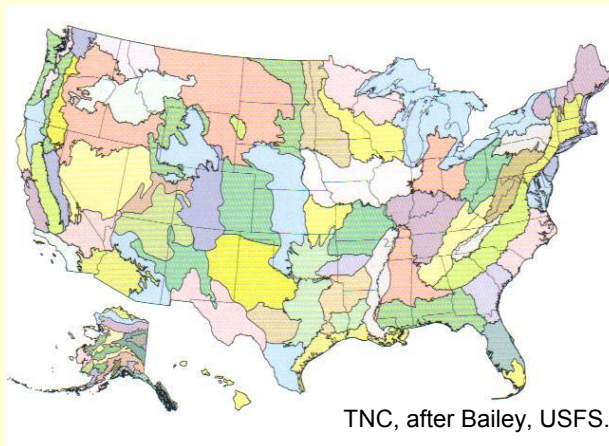


Figure 1 — Forest resource reporting regions and subregions of the United States.

12/13/2005

13

# Why not Ecological Regions?



TNC, after Bailey, USFS.

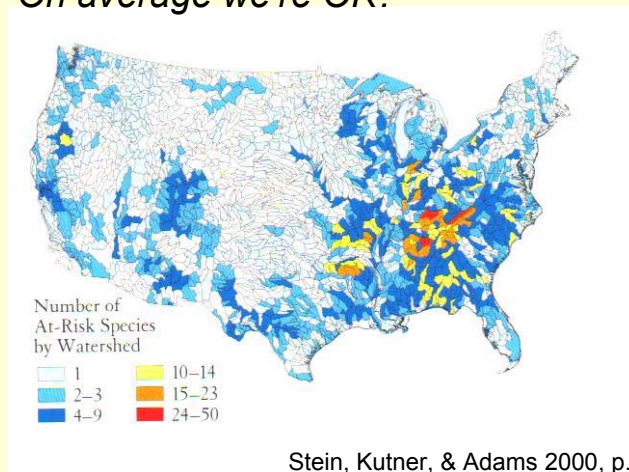
*FIA DB can be poured into this format  
(option offered on FIA Website)*

12/13/2005

14

Challenge: how to summarize this?

*On average we're OK?*



12/13/2005

15

## Tough Questions

- When will we adopt a Definition of SFM?
- How to fit in the Outlook?
- How can we summarize/present to various audiences?
- Could we do an Index (cf Dan Esty's ESI)
  - Issue: the weights
  - So what? Let everyone use their own

12/13/2005

16

## More TQ's

- Why not discuss competing views?
- What do all the econ. numbers really tell us about SFM?
  - ... not very much

## Alts. to National Aggregates

- Selected regional/local proxies
- Need meaningful regions (ecological?)
- Indicator species
- Thematic assessments over time, regional or topical (e.g. RPA papers)
- More by States (see California)

## So, what do C&I tell us?

- Not much
- Indicators NOT a substitute for a definition of SFM
- First generation Indics weak
- Economic/policy Indics not compelling
- Ecosystem Health basically blank
  - None of which are fault of authors of FS-766.

12/13/2005

19

## LCI Recommendations

- Revise Montreal C&I – not a committee this time!
- Address aggregation problems
- Fill gaps – proxies for ecosystem health just start somewhere...
- Set econ/policy to one side for now
- Find better ways to Present complex information
- Try an Independent Assessment, a la Heinz

12/13/2005

20



12/13/2005

21