

# Southern Roundtable on Sustainable Forests

Bob Fledderman  
MeadWestvaco

National Roundtable on Sustainable Forests  
September 7, 2006

# Southern Roundtable on Sustainable Forests Summer 2006 Update

- Viewsheds Initiative (Tennessee)
- Water Quality Initiative (Cumberland Plateau, Tennessee)
- Forest Fragmentation Initiative (Western North Carolina)
- Urban Sprawl Initiative

# Southern Roundtable on Sustainable Forests Summer 2006 Update

- Non-Industrial Private Landowners (Family Forests) and Incentives
  - Southern Group of State Foresters
  - Phase I complete (survey)
    - Why do you own forest land?
    - What pressures might cause you to convert to non-forest?
    - What measures might reduce those pressures?
    - What public or private forestry services to you use or need?
    - Which services are the most important?
  - Contact – Mike Countess (SGSF Policy Analyst)

# C&I Indicators and Metrics

Moving the ball

vs.

Determining where the ball  
is and where it's going

# National Indicators and Metrics

- Support internationally agreed framework
- Better coordination of data collection
- Better interagency cooperation (more efficient data gathering and reporting)
- Consistently collected data
- Potentially useful for landscape level issues as well

# National Indicators and Metrics

- Too many indicators
  - 67 is lot
  - Focus on priority indicators initially
  - Add others in a few at a time
- Metrics need work
  - Different metrics
  - Better data
- Some metrics need alternative data protocols for smaller scale project
  - National metrics are too coarse
  - Cumberland Plateau

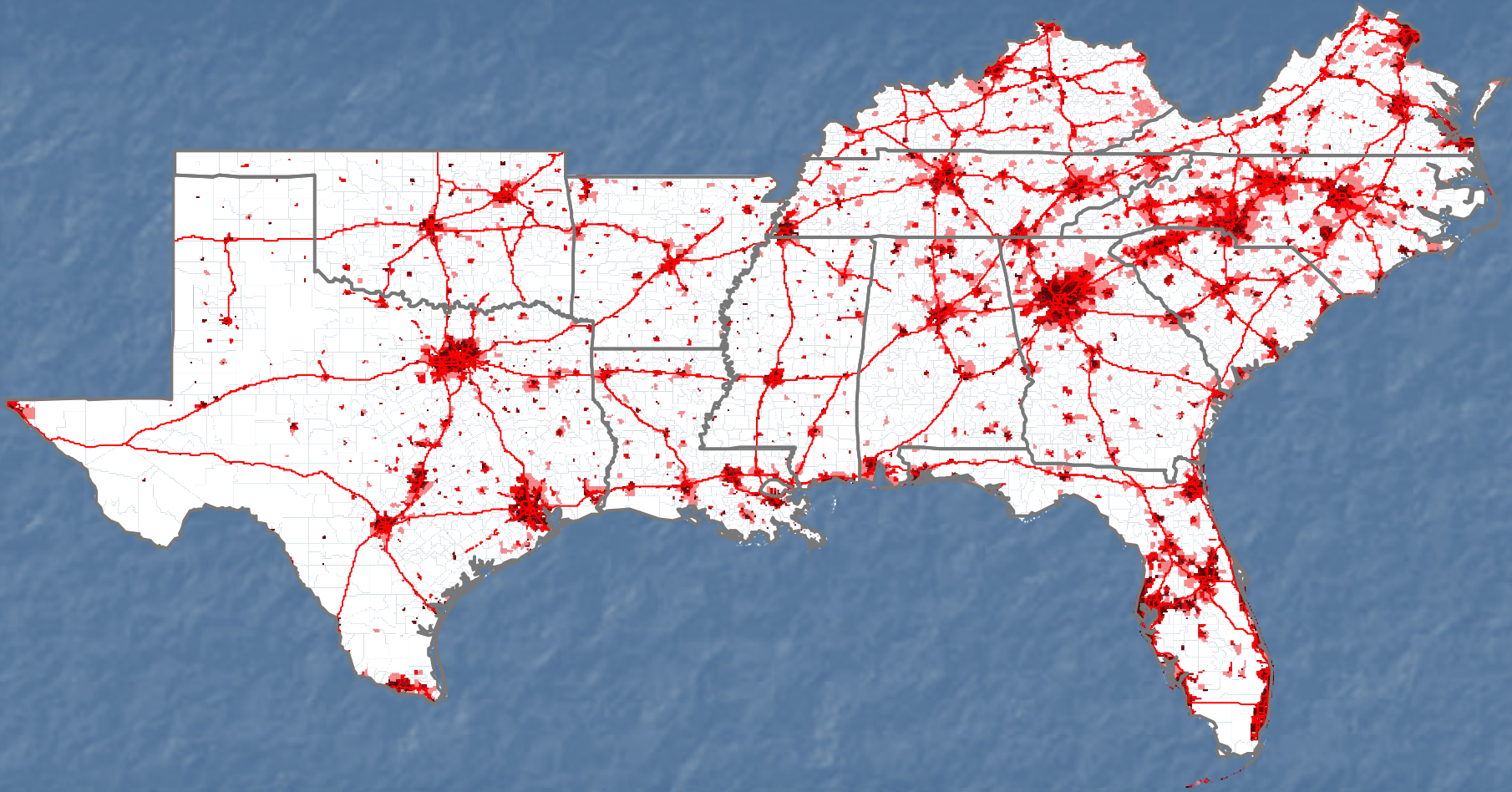
# Northeast Model

- Inclusive process
- 18 base indicators
- 71 metrics

# Top Indicators – Overall South

- Land use (amount and trends)
- Community capacity/benefits
- Water quality and quantity
- Native/non-native (ecosystems, plants, animals)
- Economic contribution
- Net ecosystem productivity
- Policies and regulations
- Fragmentation and parcelization

# Population Centers



We need to work on keeping forests  
in forests now.

# Take Aways

- Keep forests in forests
- Identify priority (base) C&I Indicators
  - By Region
- Identify appropriate metrics and efficient data collection systems for priority (base) indicators
  - National scale
  - Local scale
- Harmonize regional approaches
- Add additional indicators as resources permit

The Facts are not in Dispute

Thank You