

LANDOWNER OUTREACH IN ALABAMA

ALABAMA FORESTRY COMMISSION

Linda Casey

February 26, 2008



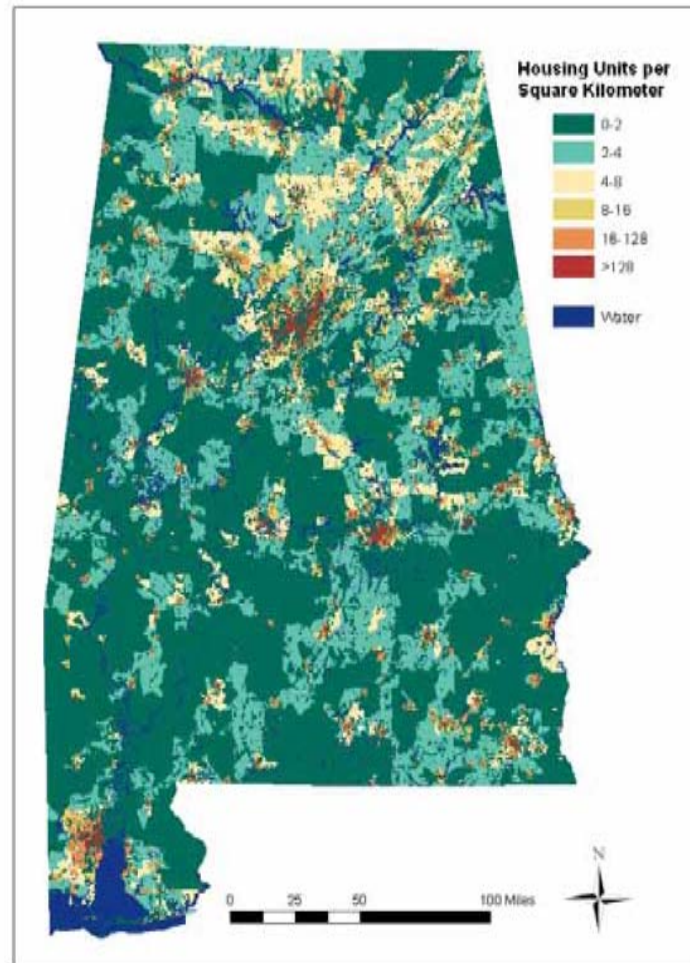


Vision for Alabama's Forest

What's Changing

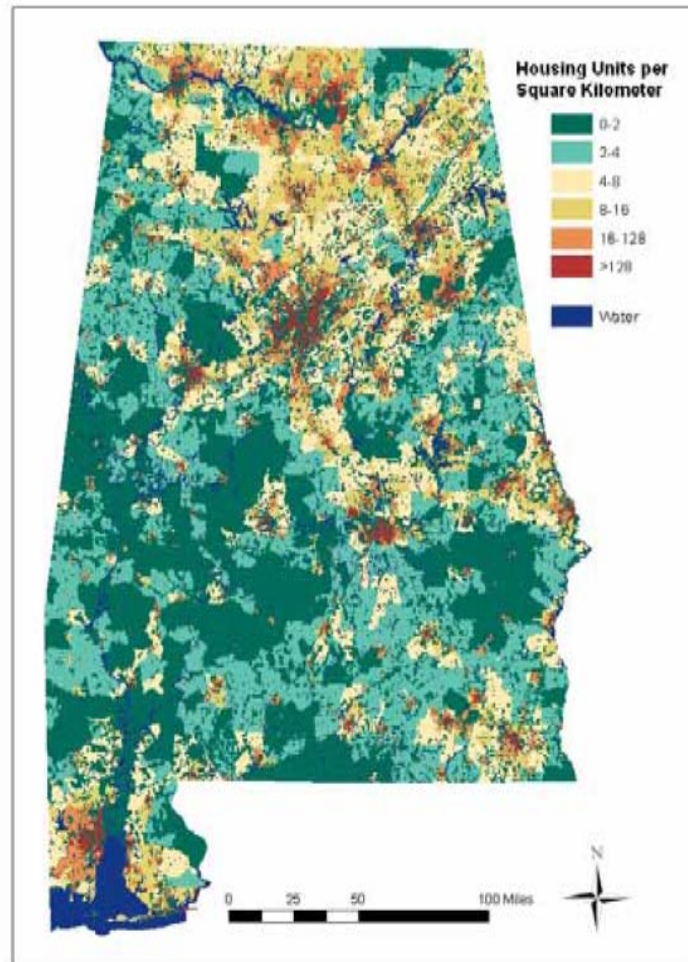
- Fragmentation of the forest
- Smaller, diverse landowners will result in changing forest objectives
- Potential for forest resource management education gap
- Changes in forest industry will impact markets and products
- Potential changes to other users of forest resources

Alabama's Changing Landscape



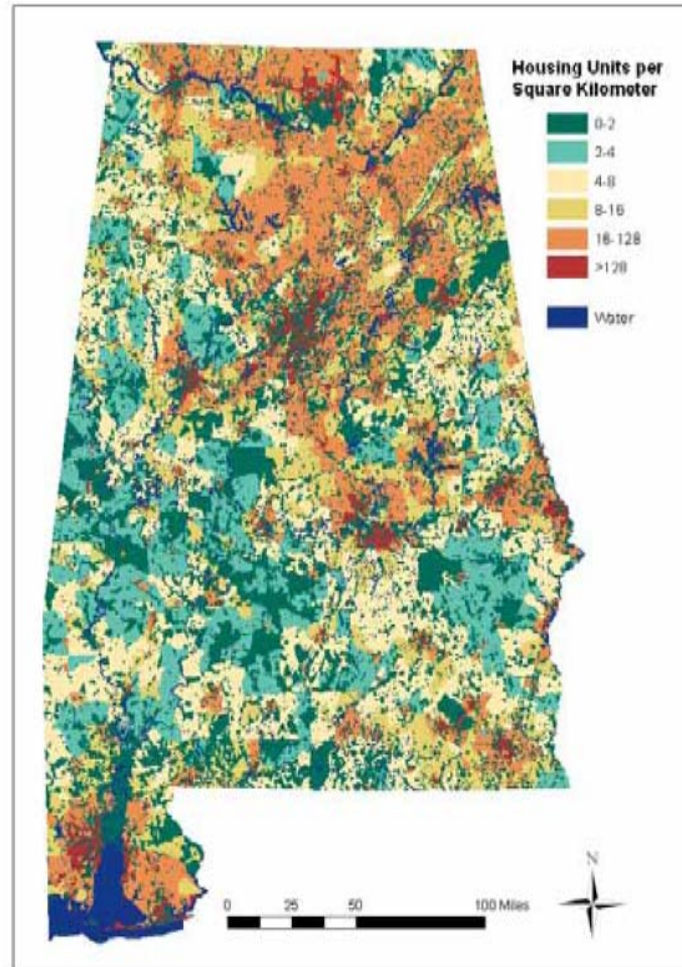
1950

Alabama's Changing Landscape



1990

Alabama Forestry Commission Implementation Steps



2030



Vision for State of Alabama's Forest

- *Alabama's Forest Resources are Abundant, Productive, Healthy and Diverse. They meet the Social and Economic Needs of all Stakeholders when we:*
 - Provide landowners and other stakeholders education, knowledge and assistance to maximize financial returns
 - Support establishment of new forests or regeneration of existing forests



Vision for State of Alabama's Forest

- Employ existing and new technologies to protect forests from fire, insects, disease, theft and increase overall forest productivity
- Enhance the protection of watersheds and riparian zones
- Identify and protect fragile and unique sites
- Provide maximum enjoyment and appreciation of the forest for all stakeholders



Alabama Forestry Commission Implementation Steps

I. Provide Landowners and Other Stakeholders, Education, Knowledge and Assistance to Maximize Financial Returns

- Enhance and expand identification and recruitment of new and expanding markets
- Work with landowners to adapt marketing strategies and products to changing local, state, national and global markets




Alabama Forestry Commission Implementation Steps

- Educate landowners in merchandising their harvest to the highest and best use and the potential long-term value of certification
- Work with local, state and federal agencies to offer cost share programs, policies and subsidies to encourage landowners to practice long term sustainable forest management
- Ensure FIA data is completed on schedule and meets or exceeds the agency's goals




Alabama Forestry Commission Implementation Steps

- *II. Establishment of New Forests or Regeneration of Existing Forests*
 - Expand state forest acreage in conservation and easement programs and direct purchases of forestlands
 - Identify underserved and minority landowners and develop ways to meet their objectives
 - Support landowners and other stakeholders to manage forests that are diverse in age, species, size and spatial patterns
- 




Alabama Forestry Commission Implementation Steps

- *III. Employ Existing and New Technologies to Protect Forests from Fire, Insects, Disease, Theft and Increase Forest Productivity*
 - Support AFC Fire Protection Personnel with resources and training for fire control
 - Partner with landowners, VFD's and local governments to quickly identify and react to potential hazards
 - Provide training and education to new landowners and other stakeholders of forest resources
- 



Alabama Forestry Commission Implementation Steps

- Educate landowners in opportunities to improve forest productivity and achieve cost effective improvements
 - Ensure forest assessment goals are achieved in a timely manner
 - Utilize existing programs to help ensure successful regeneration, wildlife enhancement, recreation, etc.
 - Enhance cooperative partnership with local communities to establish and/or maintain urban forested areas
- 



Alabama Forestry Commission Implementation Steps

- *IV. Partner With Landowners and Other Stakeholders to Protect and Enhance the Effectiveness of the States Watersheds and Riparian Zones*
 - Educate landowners, loggers and other stakeholders in protecting the state's water quality
 - Develop stronger partnership with other State Agencies in ensuring compliance with BMP's



Alabama Forestry Commission Implementation Steps

- *V. Partner With Landowners and Other Stakeholders to Identify and Protect Fragile and Unique Sites*
 - Provide continued training for AFC personnel
 - AFC foresters educate and support landowners and stakeholders
 - Support land acquisition and/or conservation easement programs



Alabama Forestry Commission Implementation Steps

- *VI. Ensure That Forest Health, Diversity and Abundant Forest Lands Provide Maximum Enjoyment and Appreciation for all Stakeholders.*
 - Continue to support educational opportunities to highlight importance of forest resources and AFC's management success
 - Develop and implement specific goals that are measurable and can be used to track improvements



Alabama Forestry Commission

Closing Comments

- Challenges for every state
 - Fewer acres but more landowners
 - Changing landowner objectives
 - Changes for natural resource organizations
 - Population increase and Urbanization
 - Natural resource organizations must change focus
 - Change how we work with landowners
 - More education internally and externally
 - Become more proactive in our approach
 - Identify new partners
- 