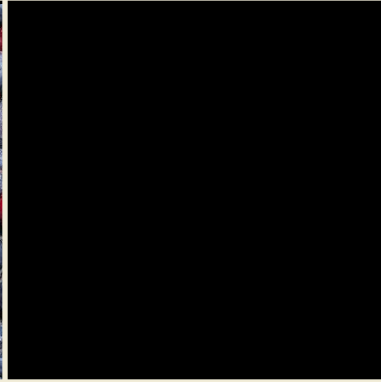
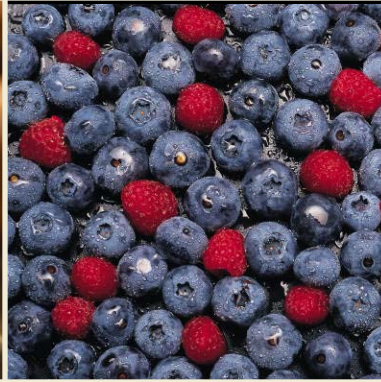




# Technical Workshop on Non-Wood Forest Products



Background, comparisons, and where  
we're headed...

Sonja N. Oswalt  
USDA Forest Service  
Southern Research Station



# Technical Workshop Goals

- Who's doing what?
- Present working definitions
- Review of 2003 NWFP
- Present changes to the NWFP indicators
- Define the challenges to reporting NWFP
- Receive feedback on potential data sources, reporting needs, reporting methods
- Locate data sources
- Create draft outlines for NWFP indicators





# NTFP 2010: Who's Doing What?



- 2010 Criterion & Indicators that refer to NWFP:
  - Criterion 2 ~ Brad Smith
    - Indicator 14: Sonja Oswalt & Jim Chamberlain
  - Criterion 6 ~ Ken Skog
    - Indicator 26: Susan Alexander
    - Indicator 29: Susan Alexander
    - Indicator 31: Susan Alexander
    - Indicator 34: Skog/ Alexander/ Cordell
    - Indicator 39: Marla Emery



Others?





# Non-Wood Forest Products Working Definition



- Current Working Definition (similar to 2003)  
Non-wood Forest Products (formerly Non-timber Forest Products) ~ Includes **game animals, fur-bearers, nuts and seeds, berries, mushrooms, oils, foliage, medicinal plants, peat, forage, etc.** In this context, such products do not include services provided by forests, such as water regulation, biodiversity conservation, recreational or spiritual values, and carbon release offsets.
- 2010 Definition excludes: Fuelwood, Pulp, Poles, etc..





# NTEFP ~ 2003



- Indicator 14: Annual removal of nontimber forest products compared to the level determined to be sustainable
- Indicator lead for 2003: Susan Alexander
- Categories addressed:
  - medicinal
  - food and forage species
  - floral and horticultural species
  - resins and oils
  - arts and crafts
  - secondary wood products such as posts and poles
  - game animals and fur bearers





# Data Sources for 2003



- USDA Forest Service National Forest, US Department of Interior, and Bureau of Land Management permits
  - Partial Availability Nationwide (except BLM)
- State & Federal Game Animal Harvest information
  - Partial Availability Nationwide
- Bureau of Census Export Data (Harmonized Tariff Codes)
- Other summarized sources (books, journal articles, etc...)





# NTFP ~ 2003: Highlights



- Medicinal NTFP

- Interest in medicinal plants & herbs is expanding in the U.S., prompting legislative protective action for some species in high demand (e.g. ginseng, goldenseal, St. Johnswort)
- Little information aside from BLM and FS permit sales exists regarding Medicinal plant harvests



- Food and Forage NTFP

- Huckleberries and blueberries are the most frequently harvested wild berries on U.S. Forests
- Food product importance differs regionally (e.g. maple products in the northeast, chanterelles in the west, pecans in the south, pinyon pine in the intermountain west)
- Some wild collection of edible NTFP has been replaced by cultivation of those products





# NTFP ~ 2003: Highlights



- Floral & Horticultural NTFP
  - Christmas tree harvest is a significant activity on public land ~ species differ by region
  - Floral & horticultural products are important contributors to regional economies in the Pacific Northwest, East, & South
  - Moss & Lichen exports are increasing
- Resin & Oil NTFP
  - Some species like wintergreen, eastern red cedar, and sassafras have international markets, but some species are now being cultivated commercially in other countries.





# NTFP ~ 2003: Highlights



- Art and Craft NTFP
  - NTFP are extremely important components of cultural arts & crafts traditions (e.g. Appalachian basket & dollmaking, Native American basket, mask & ceremonial dress making, Shaker furniture, etc...)
  - The diversity of products used in the arts & crafts industry makes tracking demand & use very challenging
- Secondary Wood Products
  - Fuel wood is a significant resource on public land





# NTFP ~ 2003: Highlights



- Game Animal & Furbearer NTFP
  - Estimates of big game populations have increased
  - Wild game contributes to rural economies through recreational uses
  - Overabundant populations can negatively impact economies
  - Participation in big game hunting has increased over the last 4-5 decades
  - Small game hunting has decreased since the mid-1970s
  - Overall, fur harvest has decreased since 1980, but has increased slightly since 1991



# Moving Forward: 2010 (left) vs 2003 (right) Indicator Changes: Side-by-Side Comparison



## Criterion 2: Maintenance of Productive Capacity of Forest Ecosystems

14. Annual Harvest of NWFP

14. Annual removal of NTFP compared to the levels determined to be sustainable

## Criterion 6: Maintenance & enhancement of long term multiple socio-economic benefits to meet the needs of societies

26. Value of NWFP produced or collected

30. Value and quantities of production of NTFP

29. Total and per-capita consumption of NWFP

34. Supply and Consumption of NTFP

30. Value & volume in roundwood equivalents of exports & imports of NWFP

32. Value of wood and non-wood products production as a percentage of GNP

31. Value of exports and imports of NWFP

34. Value of capital investment and annual expenditure in forest management, wood and NWFP industries, forest-based environmental services, recreation, and tourism

38. Value of investment, including investment in fast-growing forest health management, planted forests, wood processing, recreation, and tourism

36. Employment in the forest sector

44. Direct & indirect employment in the forest sector and the forest sector employment as a proportion of total employment

37. Average wage rates, annual average income and annual injury rates in major forest employment categories

45. Average wage rates and injury rates in major employment categories within the forest sector

39. Area and percent of forests used for subsistence purposes

47. Area and percentage of forest land used for subsistence



# NWFP ~ Challenges in Reporting



- Data Gaps!!!
  - Harvest of NWFP is not well documented
  - Data that are available do not fully represent the full range of products that comprise NWFP
  - Personal use and private land removals are largely unreported/undocumented
- Lack of general knowledge
  - What is productive capacity for NWFP?
  - What is “sustainable” for NWFP?
- Lack of Funding
  - Not a lot of attention paid to NWFP





# NWFP ~ Challenges in Reporting



- Technical Transfer

- Reporting difficulties ~ how to present qualitative data in a meaningful way?
- How to present/discuss/acknowledge data gaps?





# 2010: The Work at Hand...



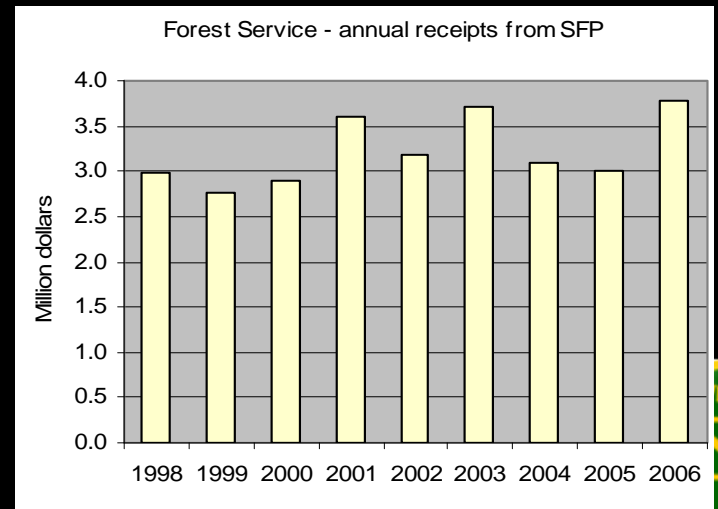
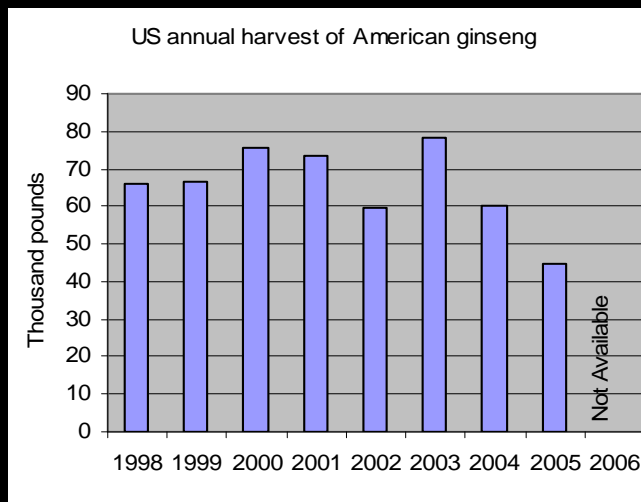
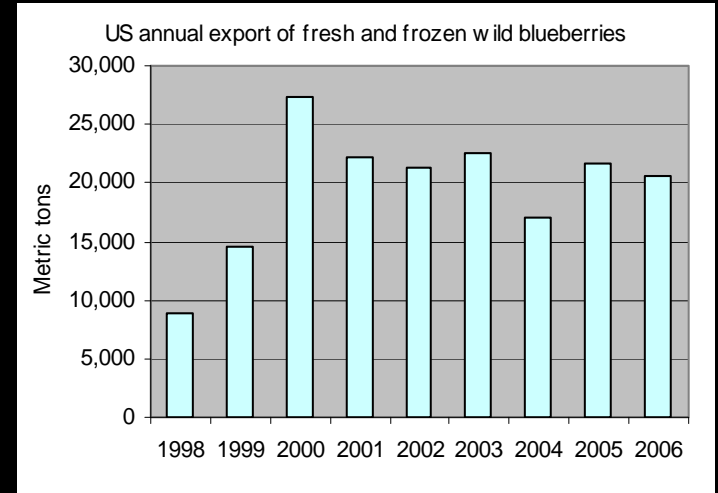
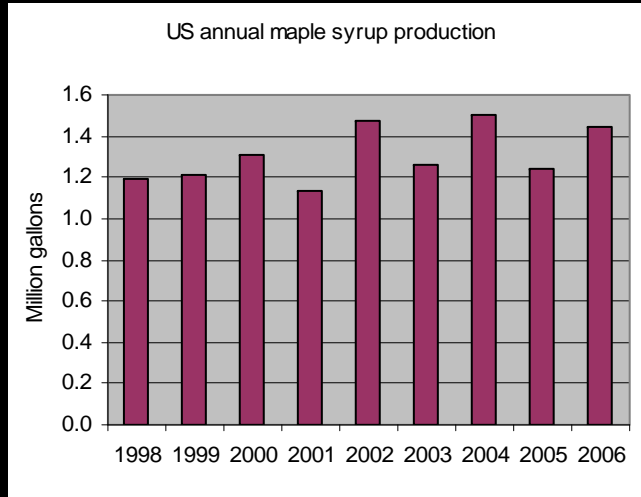
- Data for 2010...
  - New + Old data sources?
    - National Woodland Owner Survey
    - National Forest Permits
    - Harmonized Tariff Codes
    - Native American Tribes
    - International Trade Commission
    - NASS maple syrup production statistics
    - FWS ginseng harvest data
    - U of MN Extension
    - U of Kansas
    - USDA/Virginia Tech joint NWFP project
    - FIA special NWFP projects
  - New ways of looking at things...
    - Suitability maps? (Example coming up...)
    - Distribution maps?





# Examples from current RPA (Resource Planning Act) report...

(Mark Hansen, Jim Chamberlain, Keith Moser)



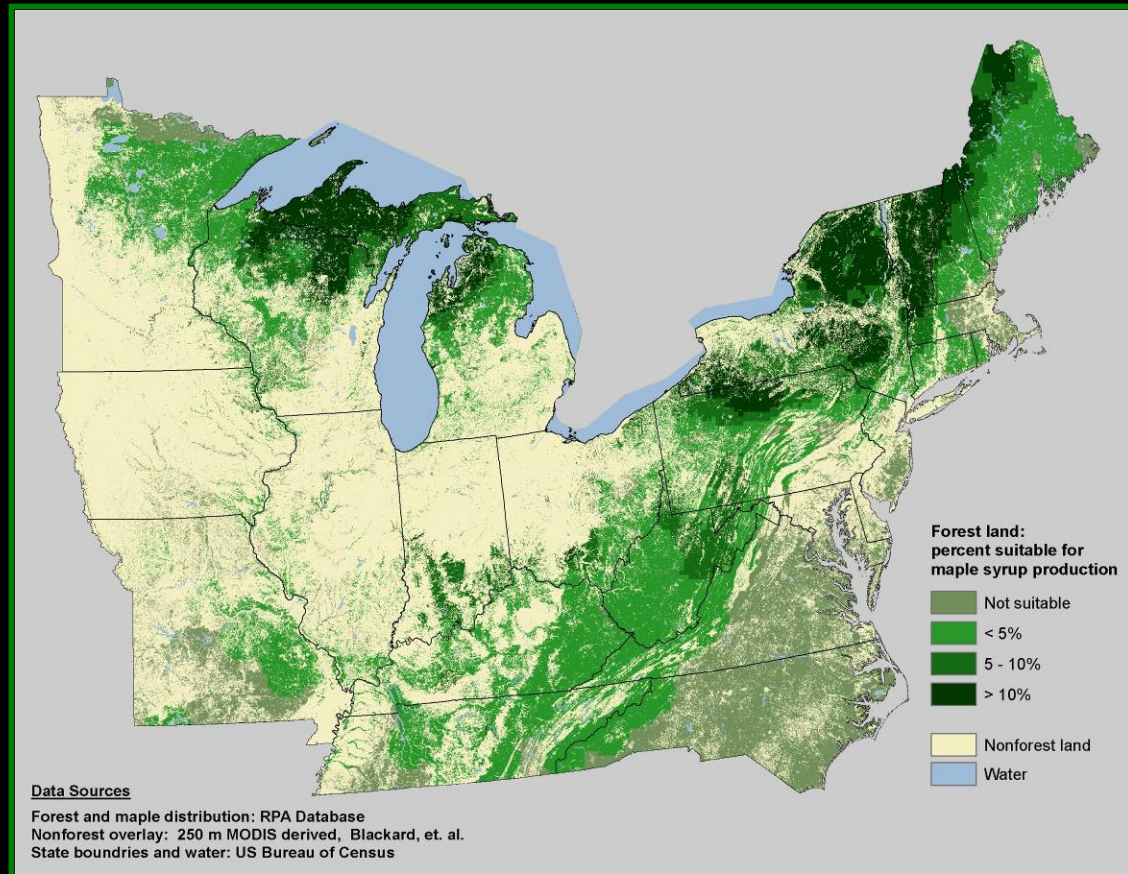


# Examples from current RPA (Resource Planning Act) report...

(Mark Hansen, Jim Chamberlain, Keith Moser)



- A new way to present some data? Suitability maps based on distribution of particular forest types, forest area, etc...



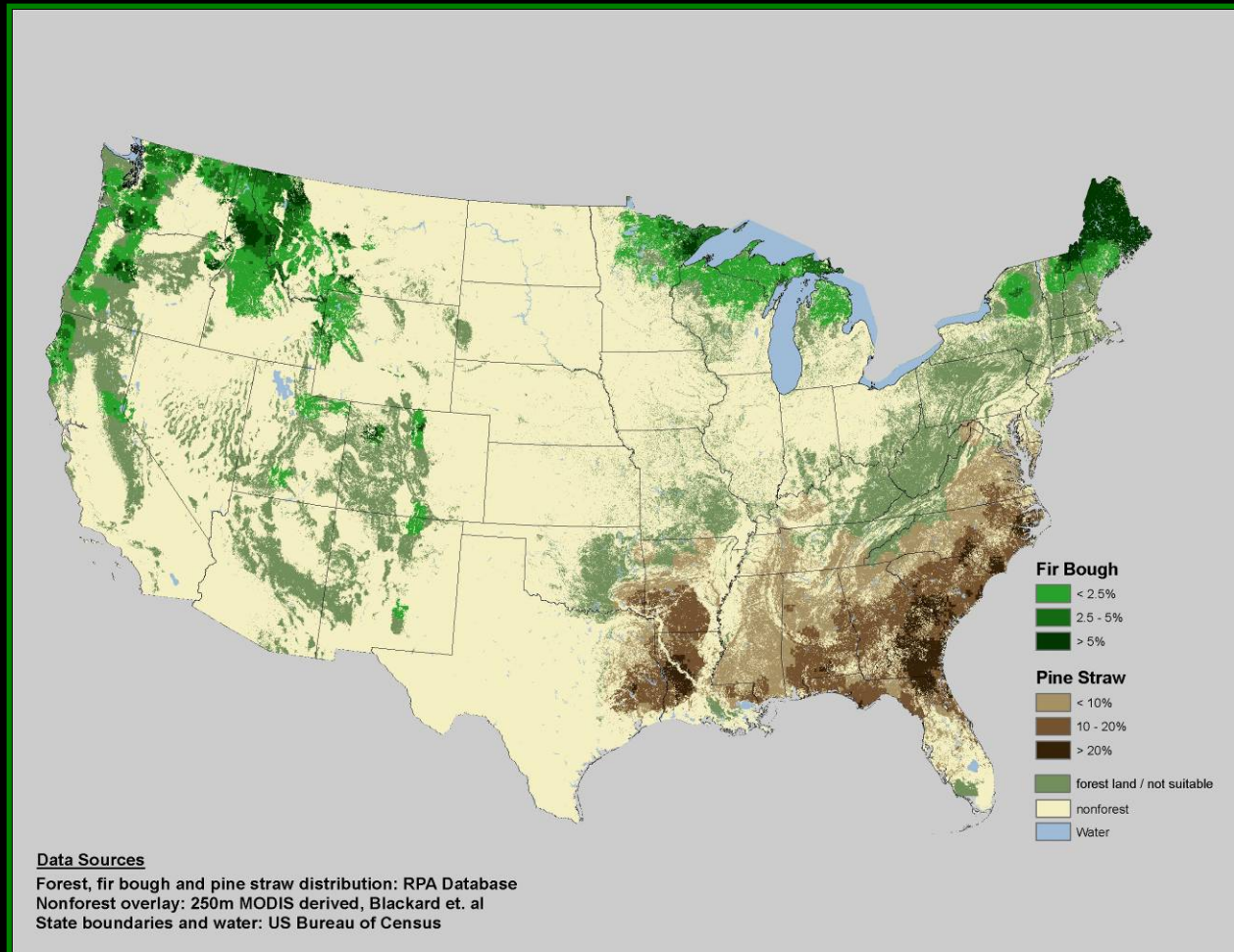


# Examples from current RPA (Resource Planning Act) report...

(Mark Hansen, Jim Chamberlain, Keith Moser)



- Another example of suitability/distribution maps





# Examples from current RPA (Resource Planning Act) report...

(Mark Hansen, Jim Chamberlain, Keith Moser)



## New Data on Private Land From NWOS

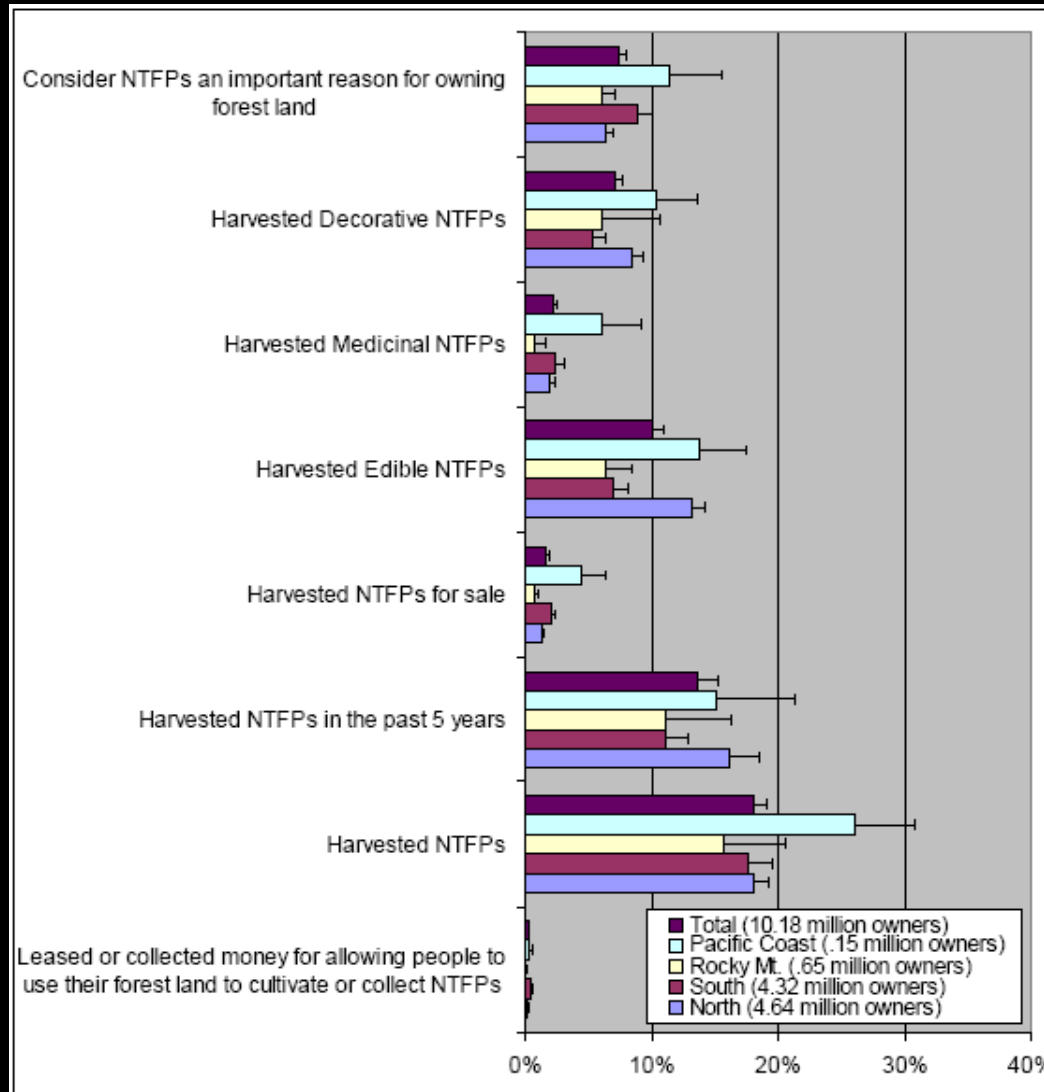


Figure 6.12. Family forest owners attitudes and activities related to nontimber forest products.





# What's Next?



- Re-examine old data sources
- Incorporate new data sources
- Consider new methods for tech transfer
- Consider what falls under the umbrella of reporting on sustainability
  - i.e...do suitability maps help, or are they outside the scope of sustainability reporting?
  - Report on individual major products, or stick to category-level results?
  - Utilize data like NWOS? Do these data really serve the task set forward?
- Partnership Reports





# Your Task...Small Groups



- Session 1 (before break): Focus on Desired Outputs from the Roundtable Stakeholders for the 2010 National Report



- Discussion item 1: What is the importance of NWFP to your communities and to the Nation, and why?
- Discussion item 2: What have we learned about NWFP since the state of knowledge reported in the 2003 National Report?





# Your Task...Small Groups



- Session 2 (after break): Focus on Technical Transfer for the 2010 National Report
  - Discussion item 1: What kinds of data should be retained from 2003, what should be removed, and what should be integrated in to 2010?
  - Discussion item 2: What aspects of NWFP uses and values are not captured by the Indicators as written?
  - Discussion item 3: What methods and sources might be used to represent those uses and values in reports on NWFP Indicators in Criteria 2 and 6 NWFP?





# Thanks To...



- Sarah Walen
- Guy Robertson
- Brad Smith
- Ruth McWilliams
- Jim Chamberlain
- Susan Alexander
- Marla Emery
- All roundtable participants!

