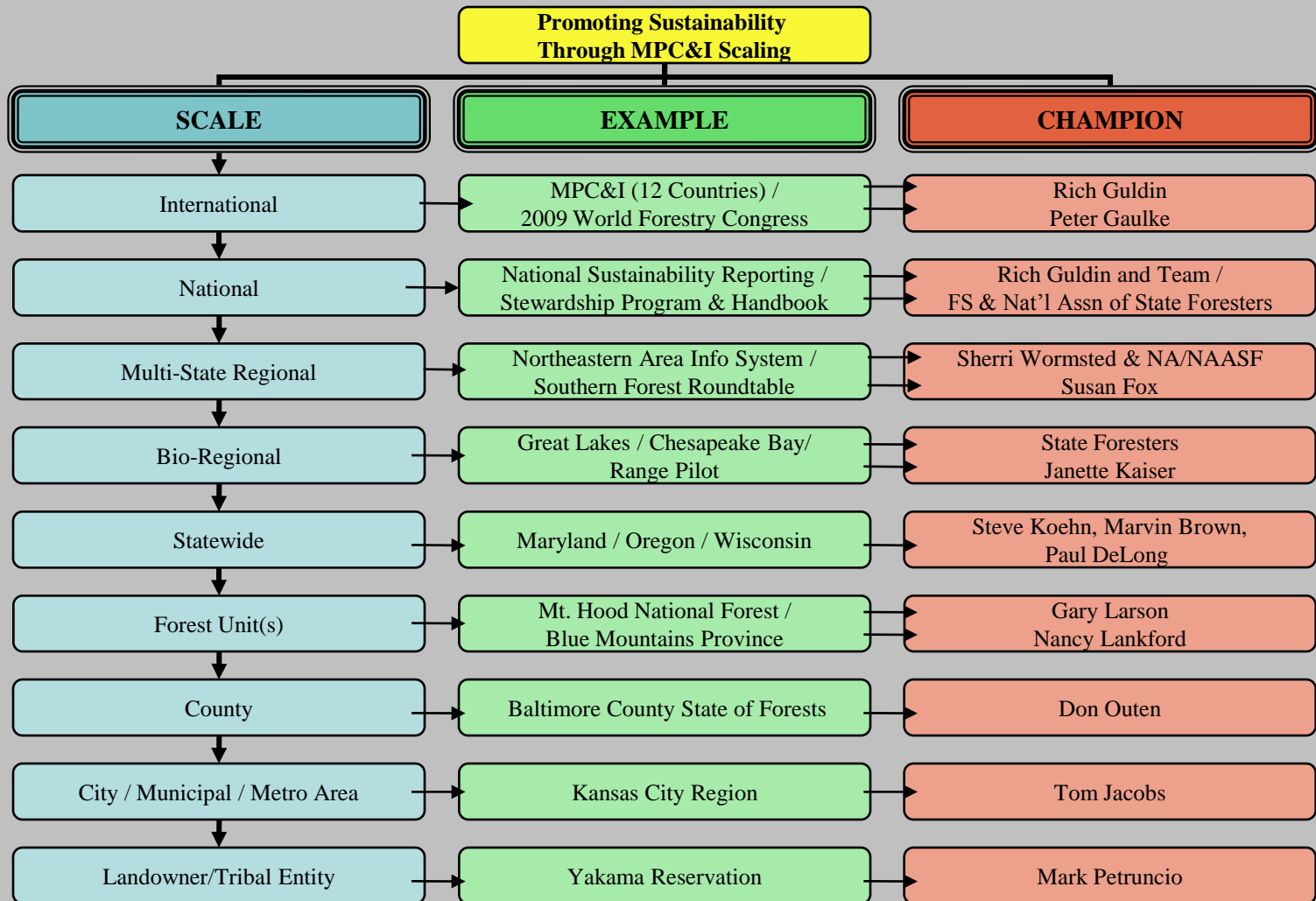


Montreal Process Criteria & Indicators

Informing Work at Multiple Scales for Various Reasons



C & I as Framework

C&I framework is being used for:

- Conceptualizing
- Visioning and Planning
- Implementing
- Monitoring, Assessing, and Reporting
- Informing and Communicating

Multiple Sector-Based Efforts

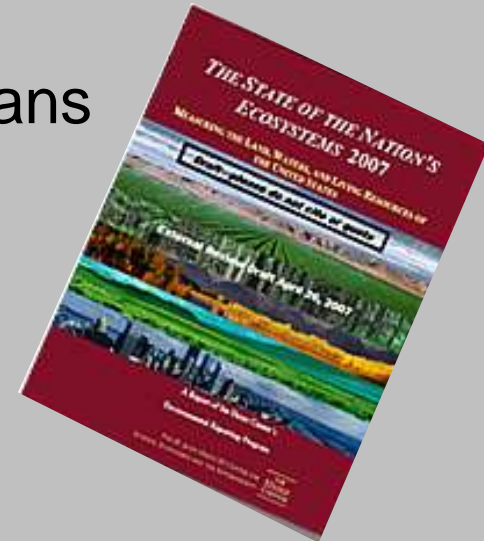
Roundtable Processes:

- Forests
- Rangelands
- Water
- Minerals / Energy

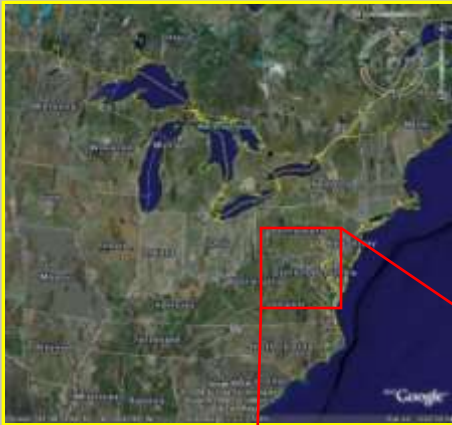
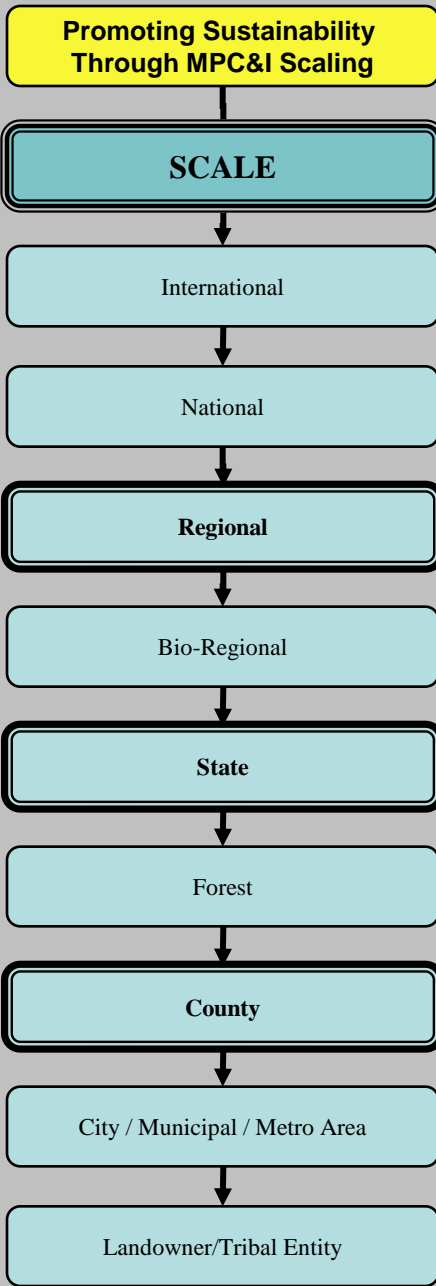


State of the Nation's Ecosystems Project:

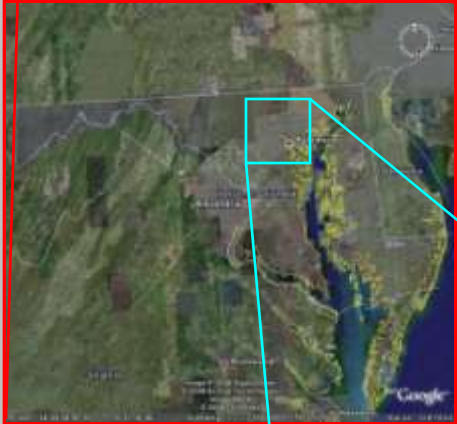
- Coasts & Oceans
- Farmlands
- Fresh Water
- Forests
- Grasslands & Shrublands
- Urban & Suburban Areas



Source: Heinz Center



NA/NAASF

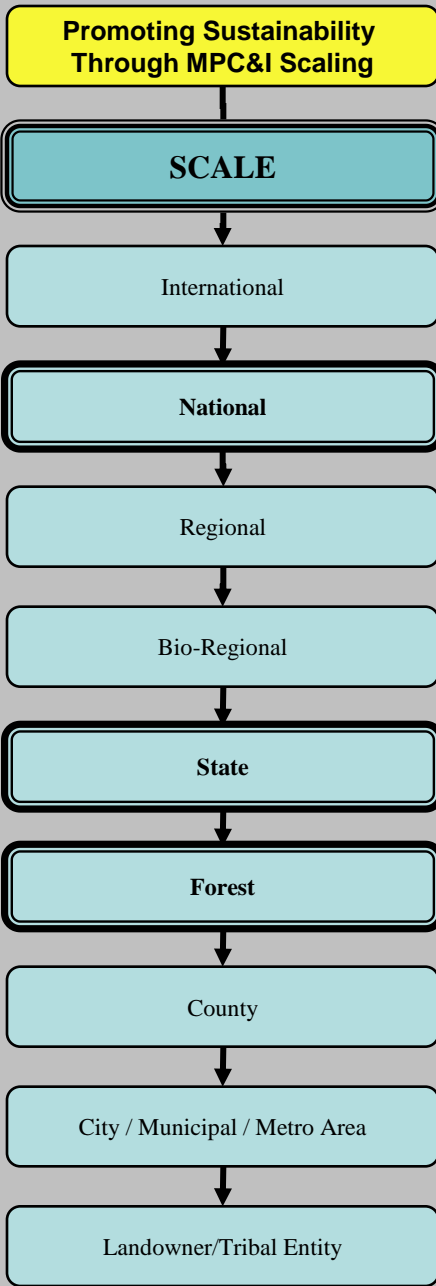


Maryland



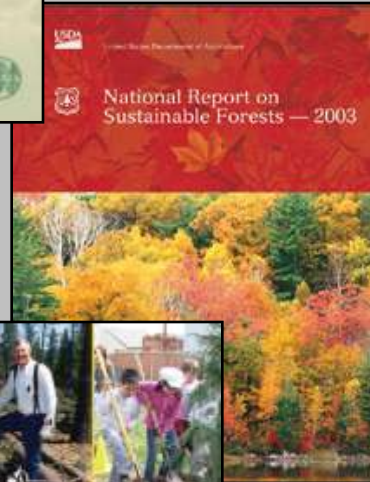
Baltimore County

Nested Efforts Promote Scaling Up and Down For Landscape Level Improvements

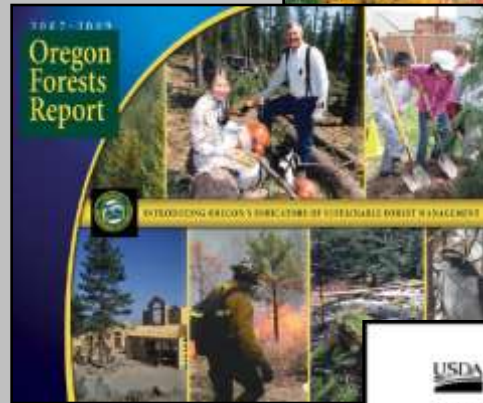


Montreal Process

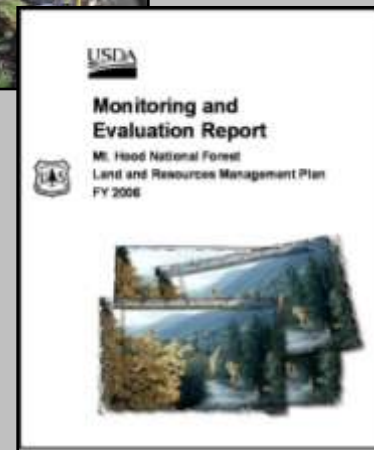
Linking Institutional Commitments at Multiple Scales



United States – National Report on Sustainable Forests



Oregon Forests Report



Mt. Hood National Forest Monitoring and Evaluation Report

Promoting Sustainability Through MPC&I Scaling

SCALE

International

National

Regional

Bio-Regional

State

Forest

County

City / Municipal / Metro Area

Landowner/Tribal Entity



Montreal Process

Linking Institutional Commitments at Multiple Scales



US Forest Service – Stewardship Program Standards & Guidelines

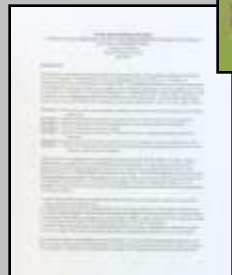


National Association of State Foresters – Stewardship Handbook

Pennsylvania (Penn State—brochure and more)



Alabama (Auburn University—website)



Oregon (Oregon State—Benton County Supplement)



Access all via Sustainable Forests Partnership website